

CONTOUR Ancillary Items

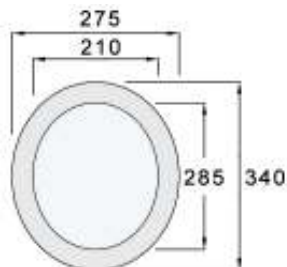
TOILET PLINTHS



55mm high



105mm high



- Toilet Plinths can be used to raise the WC pan by either 55mm or 105mm
- Screw directly to the floor or tray
- GRP construction
- An alternative to using raised toilet seats
- Designed to be used with a Magnia Po WC
- Featuring Microban® antibacterial protection



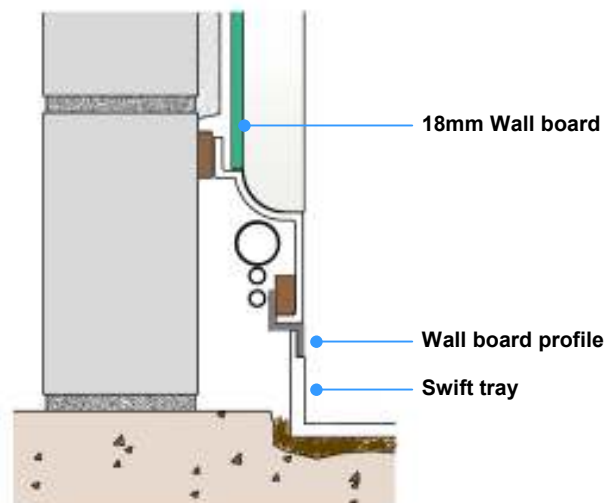
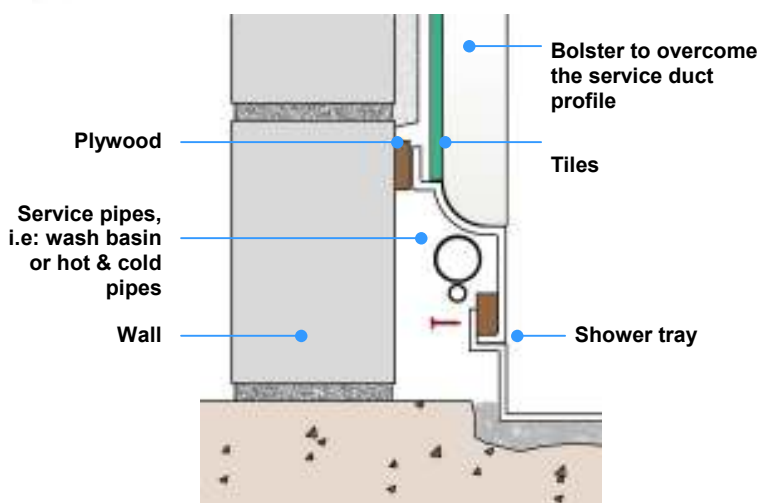
Reference

| | |
|-------|---------|
| 55mm | 26TP55 |
| 105mm | 26TP105 |

PIPE DUCTING



- Overcoming problematic above ground obstacles by using Contour's Service Duct Profile
- Creates a void approximately 75mm behind the tray allowing clearance for above ground pipework
- GRP construction
- Supplied in 2 metre lengths, can be cut to length on site
- Utilise with any shower tray that has an 18mm tiling lip
- 38mm radius accepts corner blocks that are incorporated with our Made to Measure doors. Alternatively a bolster section would be required, please ask for details
- Utilise with a Wallboard Profile if using the Pipe Duct with a Swift tray
- Featuring Microban® antibacterial protection



Reference

| | |
|--------------|----------|
| Pipe Ducting | 26PD2000 |
|--------------|----------|

TOILET SEAT



- Quick and simple to install and clean
- Adjustable, plastic hinges
- Plain white, plastic design
- Robust construction
- Fits most standard WC's
- Seat dimensions: 400mm x 365mm wide

| | Reference |
|-------------|------------------|
| Toilet Seat | 04TS01 |

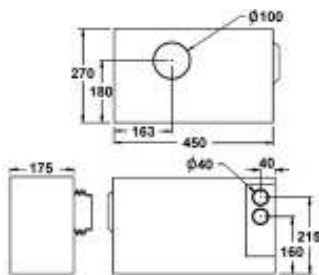
FLOOR TO CEILING GRABRAILS



- Sturdy 32mm diameter grabrail, ribbed for a secure grip
- Can be located close to WC or shower area to assist user
- Available in yellow or blue, on request, to assist the visually impaired
- Optional horizontal support for extra stability

| | Reference |
|---|------------------|
| Floor to Ceiling Grabrail | 26F2C |
| Floor to Ceiling Grabrail with Horizontal Support | 26FC2H |

MACERATOR 2



- Split system macerator unit with no external pipes, joints, valves or clips
- Suitable for use with a cubicle or to create a bathroom or utility room anywhere, even far away from the sewage pipe
- Simple to remove unit can be detached by the user without dismantling WC or disconnecting pipes
- 230V power supply
- Maximum head elevation 7 metres, maximum capacity 270 litres per minute

| | Reference |
|-------------|------------------|
| Macerator 2 | 04M2 |

Ancillary items

- Toilet Plinths
- Pipe Ducting
- Toilet Seat
- Floor to Ceiling Grabrails