

CONTOUR Eagle



Level access, bath replacement using TRUESEAL

The Eagle range of level access shower trays gives you the perfect choice when creating an unrestricted, wheelchair friendly showering area where a bathtub is no longer practical or functional.

Using TRUESEAL, our unique floor edge profile, an Eagle tray makes it possible for you to hot seam weld vinyl sheet flooring directly onto the trays unique TRUESEAL profile, creating a perfectly secure watertight joint, and vastly reducing the chances of future problems.

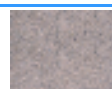
Benefits

An Eagle can be cut to length to fit exactly into the space once occupied by a bath. The installation of the tray, with the enclosure can be carried out during one site visit, leaving the flooring to be fitted afterwards. Installing an Eagle tray only requires the removal of 18mm of flooring, the equivalent of a floorboard.

- Barrier free, level access, guarantees effortless wheeledchair entry
- Create a defined shower area without reducing floor space
- Incorporating the unique Trueseal floor edge profile for that perfect waterproof joint
- Avoids the need to create difficult falls, and requires only 18mm of existing floor to be removed (apart from the trap area)
- Installation friendly, removes the need for intricate corner seam welds
- Shower tray, enclosure and any ancillary equipment can be installed during one site visit, leaving the flooring to be fitted afterwards
- Tray side walls shaped to complement coving formers
- Cut to length tray, incorporating drying area, can be cut from its original length of 1850mm to fit exactly into the space left by a bath. End plate supplied to conceal the cut end
- 25 year guarantee
- Anti-slip surface for an assured underfoot grip
- Left or right hand available



Suitable for wooden floors



Suitable for screeded floors

LEVEL ACCESS

Yes



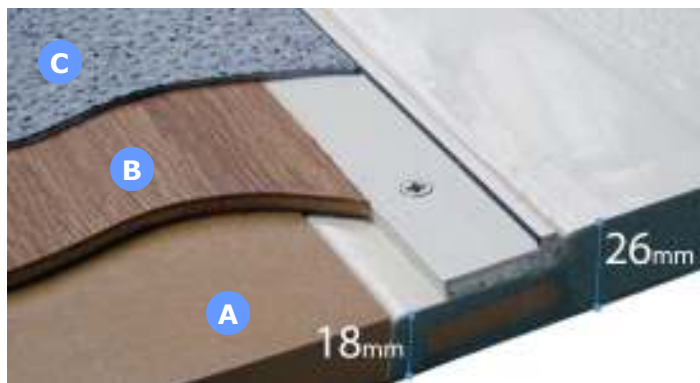
Suitable for gravity waste



Suitable for pumped waste



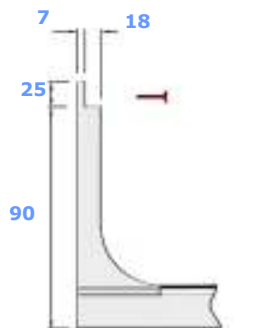
Cut to size bath replacement



A - Floorboard or concrete flooring
 B - ¼" plywood
 C - 2mm vinyl sheet flooring



Hot seam weld flooring to the Eagle



Tiling lip cross section

TRUESEAL Preparation

Only 18mm of flooring needs to be removed when installing an Eagle. ¼" plywood should then be used to cover the exposed floor and tray edge, butting up to the Trueseal profile. Vinyl sheet flooring can now be laid as necessary, overlapping the tray and floor joint.

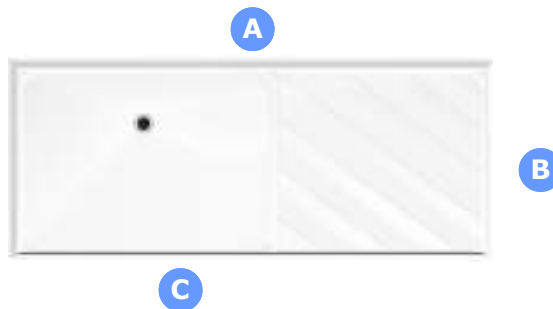
Vinyl sheet flooring should be grooved and hot seam welded directly to the black PVC insert on the TRUESEAL profile.

The Eagle has an 18mm tiling lip, which could also accommodate wallboards. The tiling lip is also used to secure the tray to the wall.

Eagle trays can also be used in a tiled floor situation, by omitting TRUESEAL during manufacture. If you intend to use floor tiles with an Eagle, please state clearly when ordering.

Trays can be cut to length by as much as:

Tray	Cut to Length
EAGL745	From 1850 to 1130mm
EAGL845	From 1850 to 1340mm



EAGL745ALH illustrated, tiled floor
 See following pages for more options



Vinyl flooring

Tray Reference	Tray Size			Showering Area	
	A	B	C	A	B
EAGL745	1850	745	1060	1050	660
EAGL845	1850	845	1270	1260	760

Both tray's are handed

Waste Options

Supplied as standard with a STW8-R 50mm water seal gravity waste. See page 96 for more details.

UPSW-3-22 available if using in a waste pump situation see page 97 for more details.



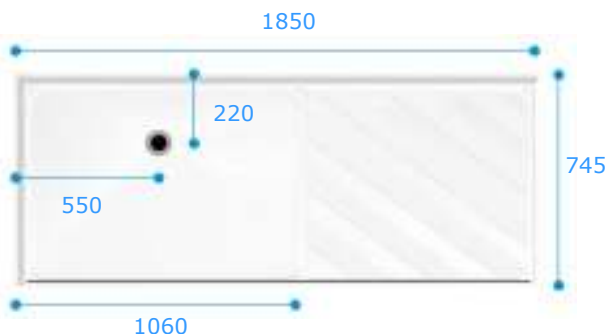
Enclosure Options >>>>>>>>

Eagle

- Incorporates TRUESEAL floor edge profile
- Remove only 18mm of flooring
- Complete level access
- Bath replacement

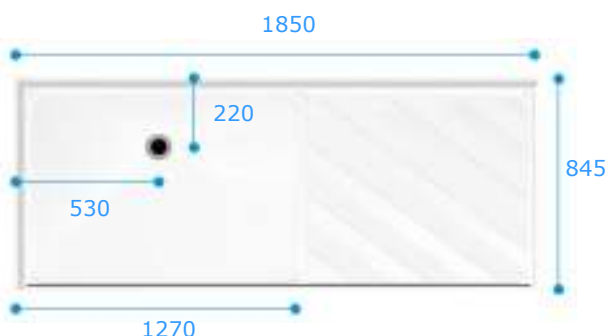
EAGLE

EAGL745 (Formerly EAGLE001)



Left hand illustrated
Reference Code: EAGL745LH
EAGL745RH

EAGL845 (Formerly EAGLE002)



Left hand illustrated
Reference Code: EAGL845LH
EAGL845RH

Option A



A – 500
B – 560
C – 555

Bi-folding door hinging from the wall for corner access.
Left hand illustrated
EAGL745LHALH
EAGL745RHARH

Option B



A – 500
B – 540
C – 285
D – 265

Tri-folding door hinging from the wall for maximum access.
Left hand illustrated
EAGL745LHBLH
EAGL745RHBRH

Option F3



**THIS OPTION IS
MADE TO MEASURE,
PLEASE ADVISE**

Two fixed panels with centralised bi-parting doors. *Left hand illustrated*
EAGL745LHF3LH
EAGL745RHF3RH

Option WF20



**Fits between
two walls
Minimum -
875mm
Maximum -
1350mm**

Sliding door extends across the front, opening outwards for full access.
Left hand illustrated
EAGL745LHWF20LH
EAGL745RHWF20RH

Option A



A – 500
B – 770
C – 655

Bi-folding door hinging from the wall for corner access.
Left hand illustrated
EAGL845LHALH
EAGL845RHARH

Option B



A – 500
B – 770
C – 335
D – 315

Tri-folding door hinging from the wall for maximum access.
Left hand illustrated
EAGL845LHBLH
EAGL845RHBRH

Option F3



**THIS OPTION IS
MADE TO MEASURE,
PLEASE ADVISE**

Two fixed panels with centralised bi-parting doors. *Left hand illustrated*
EAGL845LHF3LH
EAGL845RHF3RH

Option WF20



**Fits between
two walls
Minimum -
875mm
Maximum -
1350mm**

Sliding door extends across the front, opening outwards for full access.
Left hand illustrated
EAGL845LHWF20LH
EAGL845RHWF20RH

Option X



A – 700

Single full height fixed panel, 1850mm, with a ribbed vertical support. *Left hand illustrated*
EAGL745LHXLH
EAGL745RHXRH

Option F1



THIS OPTION IS MADE TO MEASURE, PLEASE ADVISE

Bi-folding door hinging from the wall for easy access with a fixed panel. *Left hand fixed panel illustrated*
EAGL745LHF1LH
EAGL745RHF1RH

Option F2



THIS OPTION IS MADE TO MEASURE, PLEASE ADVISE

Bi-parting doors hinging from the wall and fixed panel for easy access from the right hand side of the shower area. *Left hand fixed panel illustrated*
EAGL745LHF2LH
EAGL745RHF2RH

Option WF27



Fits between two walls
Minimum - 1375mm
Maximum - 1850mm

Sliding door extending across the front to meet a 500mm fixed panel. *Left hand illustrated*
EAGL745LHWF27LH
EAGL745RHWF27RH

Option X



A – 875
B – 730

Single full height fixed panel, 1850mm, with a ribbed vertical support. *Left hand illustrated*
EAGL845LHXLH
EAGL845RHXRH

Option F1



THIS OPTION IS MADE TO MEASURE, PLEASE ADVISE

Bi-folding door hinging from the wall for easy access with a fixed panel. *Left hand fixed panel illustrated*
EAGL845LHF1LH
EAGL845RHF1RH

Option F2



THIS OPTION IS MADE TO MEASURE, PLEASE ADVISE

Bi-parting doors hinging from the wall and fixed panel for easy access from the right hand side of the shower area. *Left hand fixed panel illustrated*
EAGL845LHF2LH
EAGL845RHF2RH

Option WF27



Fits between two walls
Minimum - 1375mm
Maximum - 1850mm

Sliding door extending across the front to meet a 500mm fixed panel. *Left hand illustrated*
EAGL845LHWF20LH
EAGL845RHWF20RH

Eagle

- Incorporates TRUESEAL floor edge profile
- Remove only 18mm of flooring
- Complete level access
- Bath replacement