

CONTOUR Kestrel



Above ground, self supporting & only 35mm high

The Kestrel tray is the lowest in height within our range of low level shower trays. A Kestrel will require only the minimum amount of disruption and modification to a property and could also be recessed into the floor to provide level access.

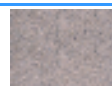
Benefits

This type of self supporting shower tray can rest unsupported on top of the existing bathroom floor without having to be bedded down onto a sand and cement mix or similar. Easy to step in to at just 35mm high, a Kestrel tray is not handed and is ideal for use in a left or right hand adaptation.

- Low entry point for easy step in, only 35mm high
- Suitable for wooden or solid floor situations
- Can be recessed into the floor if required by 35mm for complete level access
- Self supporting, does not require bedding down onto a sand and cement mix
- Reinforced construction
- 25 year guarantee
- Central waste position to allow trap to avoid joists
- Anti-slip surface for an assured underfoot grip
- Tray not handed



Suitable for wooden floors



Suitable for screeded floors



Above ground, low level tray



Only 35mm high



Suitable for gravity waste

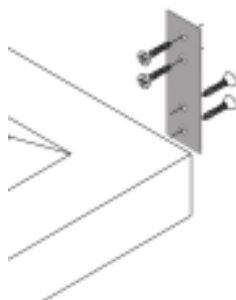


Suitable for pumped waste





Central waste position



Fixing bracket

Self supporting

Designed for quick and easy installation, a Kestrel can easily adapt a bathroom to provide low level step-in or complete level access showering solutions.

With its central waste position, the Kestrel is ideal for use in a left or right hand adaptation.

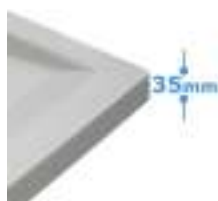
Fixing brackets are supplied to secure the shower tray to the wall.

Easy to step into at only 35mm high, the Kestrel is the lowest height tray within our range of low level shower tray's, and will rest unsupported on top of the existing bathroom floor.

A Kestrel could be recessed into the floor to provide level access.



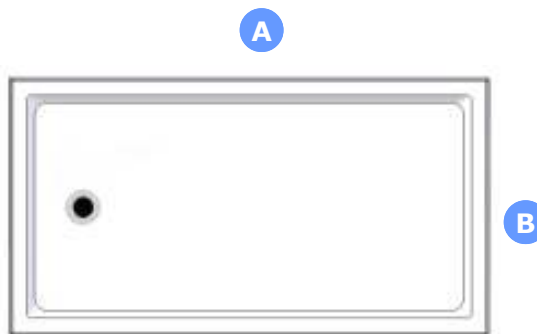
Low level access, only 35mm high



Tray height



Kestrel C RH illustrated
See following pages for more options



Tray Reference	Tray Size		Showering Area	
	A	B	A	B
KEST	1200	710	1120	630

Kestrel tray is not handed



Tray can be easily recessed into a wooden floor

Waste Options

Supplied as standard with a STW8-R 50mm water seal gravity waste, see page 96 for more details.



UPSW-3-22 available if using in a waste pump situation see page 97 for more details.



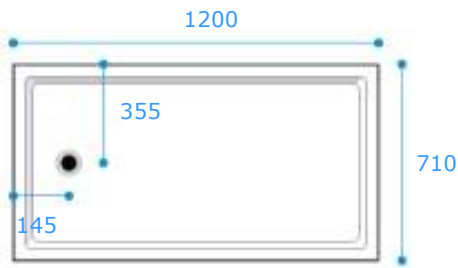
Enclosure Options >>>>>>>>>>

Kestrel

- Self supporting
- Only 35mm high
- Can be recessed into the floor
- Centralised waste position

KESTREL

KESTREL



Tray not handed
Reference Code:
KEST

Option A



A – 285
B – 655
C – 635

Bi-parting doors for corner access and ease of use. Vertical support pole, which is strong enough to act as a grabrail. *Right hand illustrated*
KESTALH
KESTARH

Option B



Bi-parting doors with a fixed panel where assisted bathing is required. *Right hand illustrated*
KESTBLH
KESTBRH

'The inclusion of Microban® antibacterial protection in all our shower trays helps control the growth of harmful bacteria in between cleaning sessions.'

'On unprotected surfaces bacteria can double every 20 minutes.'

Option C



Twin bi-parting doors provide maximum access in a confined space. *Right hand Illustrated*
 KESTCLH
 KESTCRH

Option E



Full height enclosure at 1850mm, with full height outward opening door. *Right hand illustrated*
 KESTELH
 KESTERH
 *Curtain not supplied with this option

Option X



Single full height fixed panel, 1850mm, with a ribbed vertical support. *Right hand illustrated*
 KESTXLH
 KESTXRH

'See the benefit our 3D design service can offer.

Take advantage of our FREE no obligation survey'



Kestrel

- Self supporting
- Only 35mm high
- Can be recessed into the floor
- Centralised waste position