

CONTOUR Kittiwake



Above ground, bath replacement with built in pipe duct, only 80mm high

An above ground bath replacement tray at only 80mm in height, that can be installed on any floor type, even an unbreachable surface. The Kittiwake can be cut to length on site to fit exactly the space once occupied by a bath and incorporates a drying area and an end plate to conceal the cut end of the shower tray

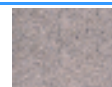
Features

Incorporating a built in pipe duct, the design of the Kittiwake allows the installer a number of options as to where the waste water pipework can exit this shower tray. With the added ability of being cut to length, this tray can fit perfectly between three walls, providing easy step in access. Optional ramp available to guarantee wheelchair access.

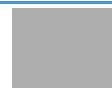
- Low entry point for easy step in, only 80mm high
- Incorporating built in pipe duct for concealed plumbing
- Waste can be taken out in several positions
- Suitable for wooden or solid floor situations
- Ramp R04 available as an optional accessory on request for guaranteed wheelchair access
- Cut to length shower tray, incorporating drying area, can be reduced from its original size of 1850mm to 1160mm to fit exactly into the space left by a bath
- 25 year guarantee
- Reinforced GRP construction
- Anti-slip surface for an assured underfoot grip
- Hair trap fitted, reduces the prospect of hair, soap or shower gels possibly causing a blockage in the outlet
- Left or right hand available



Suitable for wooden floors



Suitable for screeded floors



Suitable for concrete floors



Above ground tray



Only 80mm high



Suitable for gravity or pumped waste



Bath Replacement

The Kittiwake tray has been designed as an ideal above ground replacement to a bath tub, and to provide easy step in access.

Using a suitable 50mm holesaw, or similar, depending upon your pipework, you can position the waste pipe to suit any job variation.

The hair trap reduces the prospect of hair, soap and shower gels possibly causing a blockage in the trays outlet.

The use of an optional ramp will allow for wheelchair access. See page 104 for more details.



Easy step in access



Position the waste pipe to suit



Waste pipework

Tray	Cut to Length
KITTIWAKE	From 1850 to 1160mm



Kittiwake B RH illustrated
See following pages for more options



Tray Reference	Tray Size			Showering Area	
	A	B	C	B	C
KITT	1850	750	1140	1140	700



Adjustable foot support for precise installation

Enclosure Options >>>>>>>>>

Kittiwake

- Bath replacement
- Above ground, step in tray
- Only 80mm high
- Built in pipe duct

KITTIWAKE

KITTIWAKE



Right hand illustrated
Reference Code: KITTLH
KITTRH

Option A



A - 520
B - 610
C - 320

Tri-folding door hinging from the wall for corner access. Vertical support pole, which is strong enough to act as a grab rail.
Right hand illustrated
KITTLHALH
KITTRHARH

Option B



A - 515
B - 290
C - 330

Twin bi-folding doors hinging from the wall and fixed panel for corner access. Vertical support pole, which is strong enough to act as a grab rail.
Right hand Illustrated
KITTLHBLH
KITTRHBRH

Option WF27



Sliding Door smoothly extends across the shower tray to meet a 500mm fixed panel.
Right hand illustrated
KITTLHWF27LH
KITTRHWF27RH

Fits between two walls
Minimum - 1375mm
Maximum - 1850mm

Option X



A - 800

Single full height fixed panel with a ribbed vertical support pole, which is strong enough to act as a grabrail.

Right hand Illustrated

KITTLHXLH
KITTRHXRH

Option F1



Bi-folding door hinging from the wall allows easy access from the left hand side of the shower tray.

Right hand fixed panel illustrated

KITTLHF1LH
KITTRHF1RH

THIS OPTION IS MADE TO MEASURE, PLEASE ADVISE

Option WF20



Sliding door extends across the front, opening outwards for full access.

Right hand illustrated

KITTLHWF20LH
KITTRHWF20RH

Fits between two walls

Minimum - 875mm

Maximum - 1350mm

'See the benefit our 3D design service can offer.

Take advantage of our FREE no obligation survey'



Kittiwake

- Bath replacement
- Above ground, step in tray
- Only 80mm high
- Built in pipe duct