



# Peacock, Owl, Lapwing Mallard, Teal & Wagtail



## Above ground, low level access at only 40mm high

At only 40mm high, this collection of low level shower trays can be installed directly onto a wooden or concrete floor for easy step-in access. The smaller size trays are ideal for smaller bathrooms with restricted space.

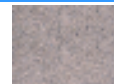
### Features

All shower trays feature a corner waste position. The square trays are not handed, making them one of the easiest shower trays to install. This type of shower tray can also be recessed into the floor by 20mm for a more comfortable low entry.

- Low entry point for easy step in, only 40mm high
- Suitable for wooden or solid floor situations
- Can be recessed into the floor if required by 20mm
- Chamfered edge to front and one side
- Reinforced GRP construction
- 25 year guarantee
- Anti-slip surface for an assured underfoot grip
- Facility for top suction waste
- Handed and non handed tray options available



Suitable for wooden floors



Suitable for screeded floors



Above ground tray



Only 40mm high



Suitable for gravity waste



Suitable for pumped waste





Low level access, only 40mm high



Chamfered tray edge



Peacock C illustrated  
See following pages for more options



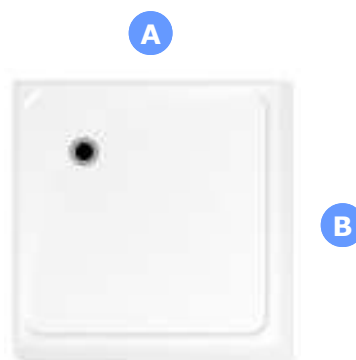
The tray can be recessed into a wooden floor

## Easy Installation

Easy to step into at only 40mm high, this type of shower tray can rest on top of the existing bathroom floor for easy low level access, or can be recessed into the floor by 20mm for a more comfortable step in entry.

The trays chamfered edge assists with wheelchair entry.

With a corner waste position, this type of tray is one of the easiest to install and are ideal for use in smaller or bathrooms with restricted space.



Tray Reference	Tray Size		Showering Area	
	A	B	A	B
PEAC*	800	800	720	720
OWL*	900	900	820	820
LAPW*	1000	1000	920	920
MALL	1200	750	1120	670
WAGT	1200	800	1120	720
TEAL	1300	710	1220	630

\* Denotes not handed trays

## Waste Options

Supplied as standard with a STW8-R 50mm water seal gravity waste, see page 96 for more details.



UPSW-3-22 available if using in a waste pump situation, see page 97 for more details.



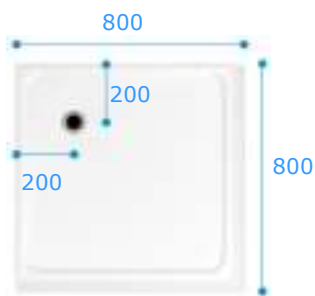
## Enclosure Options >>>>>>>>

### Peacock, Owl, Lapwing, Mallard, Teal & Wagtail

- Above ground, low level access
- Only 40mm high
- Variety of tray sizes available

# PEACOCK, OWL & LAPWING

## PEACOCK



Tray not handed  
Reference Code: PEAC

### Option A



Corner bi-folding door hinging from the fixed panel for corner access.  
*Right hand illustrated*  
PEACALH  
PEACARH

- A – 200
- B – 542
- C – 515
- D – 230

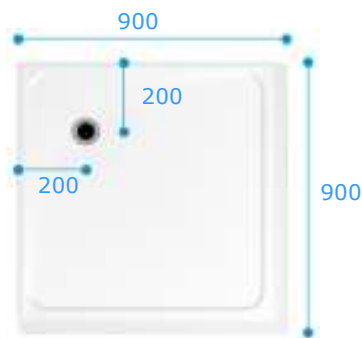
### Option B



Bi-partings door hinging from the wall for corner access.  
*Not handed*  
PEACB

- A – 650

## OWL



Tray not handed  
Reference Code: OWL

### Option A



Corner bi-folding door hinging from the fixed panel for corner access.  
*Right hand illustrated*  
OWLALH  
OWLARH

- A – 250
- B – 592
- C – 565
- D – 280

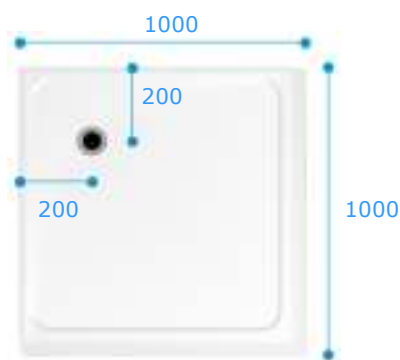
### Option B



Bi-partings door hinging from the wall for corner access.  
*Not handed*  
OWL B

- A – 750

## LAPWING



Tray not handed  
Reference Code: LAPW

### Option A



Corner bi-folding door hinging from the fixed panel for corner access.  
*Right hand illustrated*  
LAPWALH  
LAPWARH

- A – 300
- B – 642
- C – 615
- D – 330

### Option B



Bi-partings door hinging from the wall for corner access.  
*Not handed*  
LAPWB

- A – 850

Option C



A – 316  
B – 334

Twin bi-folding doors provide maximum access in a confined space.  
*Not handed*  
PEACC

Option D



A – 745  
B – 600

Single door with a fixed panel where assisted bathing is required.  
*Right hand corner illustrated*  
PEACDLH  
PEACDRH

Option E



A – 745  
B – 300  
C – 300

Bi-folding door with a fixed panel where assisted bathing is required.  
*Right hand corner illustrated*  
PEACELH  
PEACERH

Option C



A – 366  
B – 384

Twin bi-folding doors provide maximum access in a confined space.  
*Not handed*  
OWLC

Option D



A – 845  
B – 700

Single door with a fixed panel where assisted bathing is required.  
*Right hand corner illustrated*  
OWLDRH

Option E



A – 845  
B – 350  
C – 350

Bi-folding door with a fixed panel where assisted bathing is required.  
*Right hand corner illustrated*  
OWLELH  
OWLERH

Option C



A – 416  
B – 434

Twin bi-folding doors provide maximum access in a confined space.  
*Not handed*  
LAPWC

Option D



A – 945  
B – 800

Single door with a fixed panel where assisted bathing is required.  
*Right hand corner illustrated*  
LAPWDLH  
LAPWDRH

Option E



A – 945  
B – 400  
C – 400

Bi-folding door with a fixed panel where assisted bathing is required.  
*Right hand corner illustrated*  
LAPWELH  
LAPWERH

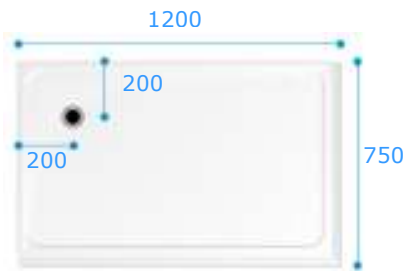
More Options >>>>

Peacock, Owl, Lapwing, Mallard, Teal & Wagtail

- Above ground, low level access
- Only 40mm high
- Variety of tray sizes available

# MALLARD, WAGTAIL & TEAL

## MALLARD



Left hand illustrated  
Reference Code: MALLLH  
MALLRH

### Option A



A – 534  
B – 616

Corner bi-parting doors for corner access, with a fixed panel. Vertical support pole, which can act as a grabrail. Right hand illustrated  
MALLHALH  
MALLRHARH

### Option B



A – 340  
B – 377  
C – 321  
D – 283

Bi-folding and tri-folding door allowing full access in a confined space. Right hand illustrated  
MALLHBLH  
MALLRHBRH

## WAGTAIL



Left hand illustrated  
Reference Code: WAGTLH  
WAGTRH

### Option A



A – 484  
B – 649

Corner bi-parting doors for corner access, with a fixed panel. Vertical support pole, which can act as a grabrail. Right hand illustrated  
WAGTLHALH  
WAGTRHARH

### Option B



A – 340  
B – 377  
C – 344  
D – 306

Bi-folding and tri-folding door allowing full access in a confined space. Right hand illustrated  
WAGTLHBLH  
WAGTRHBRH

## TEAL



Left hand illustrated  
Reference Code: TEALLH  
TEALRH

### Option A



A – 674  
B – 576

Corner bi-parting doors for corner access, with a fixed panel. Vertical support pole, which can act as a grabrail. Right hand illustrated  
TEALLHALH  
TEALRHARH

### Option B



A – 372  
B – 410  
C – 301  
D – 263

Bi-folding and tri-folding door allowing full access in a confined space. Right hand illustrated  
TEALLHBLH  
TEALRHBRH

**Option C**



A – 350  
B – 345

Optional roof available to suit this cubicle, see page 80

Full height cubicle, at 1850mm, glazed in polypropylene with half height single and bi-folding door for maximum access. *Right hand illustrated*  
MALLLHCLH  
MALLRHCRRH

**Option C with WC**



A – 350  
B – 345

Similar to Option C but with the added convenience of a wall hung WC. Cistern screened out of sight by a full height removable glazed panel. *Right hand illustrated*  
MALLLHCWCLH  
MALLRHCWCRH

**Cubicles**

A shower cubicle is the simple option when a showering solution is required with the minimum amount of installation and disruption to existing services.

A cubicle can be located up or down stairs, and as full cubicles require no tiling, they can easily be relocated if required.

The addition of grabrails, shower seat or a wash hand basin will provide a functional solution for individual requirements.

WC cubicles are supplied with an adjustable height WC frame and a Villeroy & Boch wall hung WC pan.

**Option C**



A – 350  
B – 345

Optional roof available to suit this cubicle, see page 80

Full height cubicle, at 1850mm, glazed in polypropylene with half height single and bi-folding door for maximum access. *Right hand illustrated*  
WAGTLHCLH  
WAGTRHCRH

**Option C with WC**



A – 350  
B – 345

Similar to Option C but with the added convenience of a wall hung WC. Cistern screened out of sight by a full height removable glazed panel. *Right hand illustrated*  
WAGTLHCWCLH  
WAGTRHCWCRH

**Options**

Using an optional roof with your cubicle helps to retain steam or condensation and also provides a fixing point if you wish to add an optional light or extraction fan.



For more information and options on our cubicle range see page 80.

**Option C**



A – 380  
B – 375

Optional roof available to suit this cubicle, see page 80

Full height cubicle, at 1850mm, glazed in polypropylene with half height single and bi-folding door for maximum access. *Right hand illustrated*  
TEALLHCLH  
TEALRHCRRH

**Option C with WC**



A – 380  
B – 375

Similar to Option C but with the added convenience of a wall hung WC. Cistern screened out of sight by a full height removable glazed panel. *Right hand illustrated*  
TEALLHCWCLH  
TEALRHCWCRH

**Peacock, Owl, Lapwing, Mallard, Teal & Wagtail**

- Above ground, low level access
- Only 40mm high
- Variety of tray sizes available