

CONTOUR Swift



Barrier free, level access using TRUESEAL

The Swift range of level access shower tray gives you the perfect choice when a practical, corner entry showering alternative is required.

Using TRUESEAL, our unique floor edge profile, a Swift tray makes it possible to hot seam weld vinyl sheet flooring directly onto the trays unique TRUESEAL profile, creating a perfectly secure watertight joint, and vastly reducing the chances of future problems.

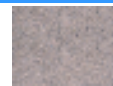
Benefits

Once fitted, a Swift provides barrier free, level access for those with mobility difficulties. The installation of the tray, with the enclosure can be carried out during one site visit, leaving the flooring to be fitted afterwards. Installing a Swift tray only requires the removal of 18mm of flooring, the equivalent of a floorboard.

- Barrier free, level access, guarantees effortless wheelchair entry
- Create a defined shower area without reducing floor space
- Incorporating the unique TRUESEAL floor edge profile for that perfect waterproof joint
- Avoids the need to create difficult falls, and requires only 18mm of existing floor to be removed (apart from the trap area)
- Installation friendly, removes the need for intricate corner seam welds
- Shower tray, enclosure and any ancillary equipment can be installed during one site visit, leaving the flooring to be fitted afterwards
- Locate in wooden or solid floor settings, minimal need for additional support under the tray required
- Can accommodate 18mm wallboards by using our Wallboard profile, please ask for further information
- 25 year guarantee
- Anti-slip surface for an assured underfoot grip
- Handed and non handed tray options available



Suitable for wooden floors



Suitable for screeded floors

LEVEL ACCESS

Yes

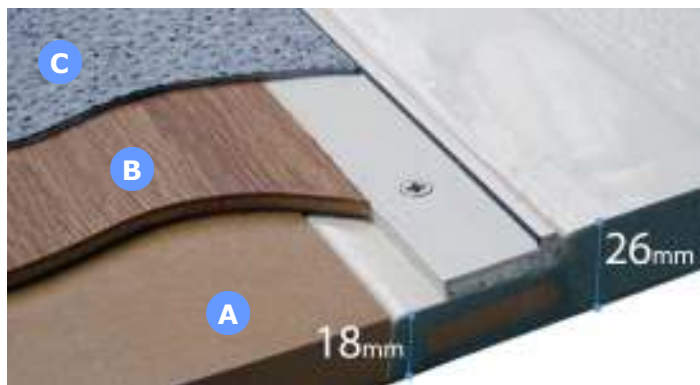


Suitable for gravity waste



Suitable for pumped waste





A - Floorboard or concrete flooring
B - 1/4" plywood
C - 2mm vinyl sheet flooring

TRUESEAL Preparation

Only 18mm of flooring needs to be removed when installing a Swift. 1/4" plywood should then be used to cover the exposed floor and tray edge, butting up to the Truseal profile. Vinyl sheet flooring can now be laid as necessary, overlapping the tray and floor joint.

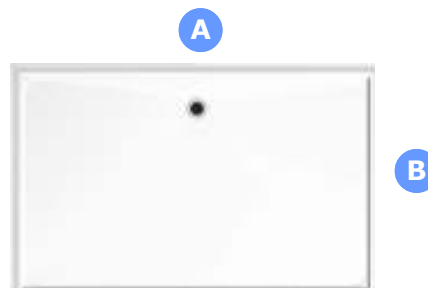
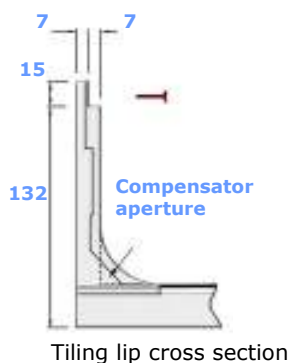
Vinyl sheet flooring should be grooved and hot seam welded directly to the black PVC insert on the TRUESEAL profile.

All Swifts have a 7mm tiling lip, which can also accommodate wallboards by using an additional profile see page 106 for more details. The tiling lip is also used to secure the tray to the wall.

Swift trays can also be used in a tiled floor situation, by omitting TRUESEAL during manufacture. If you intend to use floor tiles with a Swift, please state clearly when ordering.



Hot seam weld flooring to the Swift



SWIF1345LH illustrated, with vinyl flooring

Reference	Tray Size		Showering Area	
	A	B	A	B
SWIF945*	945	945	870	870
SWIF1045*	1045	1045	970	970
SWIF1095	1095	795	1020	720
SWIF1245*	1245	1245	1170	1170
SWIF1295	1295	745	1220	670
SWIF1345	1345	845	1270	770

* Denotes not handed trays



Swift tiling option

Waste Options

Supplied as standard with a STW8-R 50mm water seal gravity waste, see page 96 for more details.

UPSW-3-22 available if using in a waste pump situation see page 97 for more details.



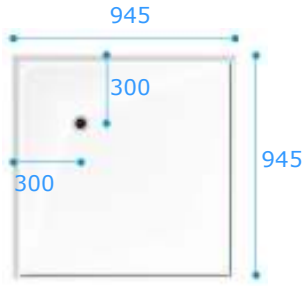
Enclosure Options >>>>>>>>>>

Swift

- Incorporates TRUESEAL floor edge profile
- Remove only 18mm of flooring
- Complete level access
- Variety of tray sizes available

SWIFT

SWIF945 (Formerly SWIFT003)



Tray not handed.
Reference Code: SWIF945

Option A



A – 290
B – 580
C – 590
D – 280

Bi-folding door hinging from a fixed panel for corner access.
Right hand illustrated
SWIF945ALH
SWIF945ARH

Option B



A – 780

Bi-parting doors hinging from the wall for maximum access.
Not handed
SWIF945B

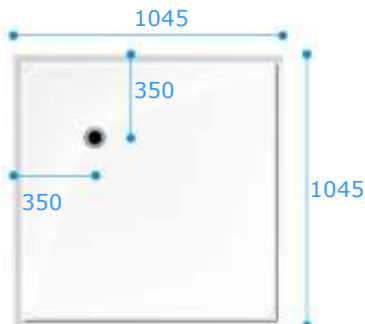
Option C



A – 380
B – 400

Twin bi-folding doors provide maximum access in a confined space.
Not handed
SWIF945C

SWIF1045 (Formerly SWIFT002)



Tray not handed.
Reference Code: SWIF1045

Option A



A – 370
B – 600
C – 610
D – 360

Bi-folding door hinging from a fixed panel for corner access.
Right hand illustrated
SWIF1045ALH
SWIF1045ARH

Option B



A – 300
B – 640

Bi-parting doors hinging from fixed panels for corner access.
Not handed
SWIF1045B

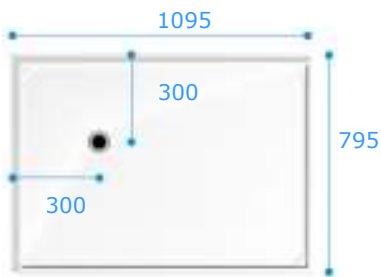
Option C



A – 430
B – 450

Twin bi-folding doors provide maximum access in a confined space.
Not handed
SWIF1045C

SWIF1095 (Formerly SWIFT004)



Left hand illustrated.
Reference Code: SWIF1095

Option A



A – 400
B – 625
C – 630

Bi-folding door hinging from the wall for corner access.
Right hand illustrated
SWIF1095LHALH
SWIF1095RHARH

Option B



A – 375
B – 650
C – 640

Bi-folding door hinging from the fixed panel for corner access.
Right hand illustrated
SWIF1095LHBLH
SWIF1095RHBRH

Option C



A – 400
B – 620
C – 630

Bi-parting doors for corner access and ease of use.
Right hand illustrated
SWIF1095LHCLH
SWIF1095RHCRH

Option D



A – 875
B – 730

Single door with a fixed panel where assisted bathing is required.
Right hand illustrated
SWIF945DLH
SWIF945DRH

Option E



A – 875
B – 335
C – 375

Bi-folding door with a fixed panel where assisted bathing is required.
Right hand illustrated
SWIF945ELH
SWIF945ERH

Option WF5



Minimum - 875mm
Maximum - 1350mm

Twin sliding doors opening outwards for maximum access and ease of use.
Not handed
SWIF945WF5

Option D



A – 975
B – 415
C – 405

Bi-parting doors with a fixed panel where assisted bathing is required.
Right hand illustrated
SWIF1045DLH
SWIF1045DRH

Option E



A – 975
B – 405
C – 425

Bi-folding door with a fixed panel where assisted bathing is required.
Right hand illustrated
SWIF1045ELH
SWIF1045ERH

Option WF5



Minimum - 875mm
Maximum - 1350mm

Twin sliding doors opening outwards for maximum access and ease of use.
Minimum 875mm & maximum 1350mm
Not handed
SWIF1045WF5

Option D



A – 445
B – 485
C – 630

Bi-folding and single door for maximum tray access.
Right hand illustrated
SWIF1095LHDLH
SWIF1095RHDRH

Option E



A – 640
B – 320
C – 725

Full height enclosure at 1850mm, with full height outward opening door.
Right hand illustrated
SWIF1095LHELH
SWIF1095RHERH
*Curtain not supplied with this option

Option F



A – 610
B – 415
C – 725

Single door with fixed and return panel where assisted bathing is required.
Right hand illustrated
SWIF1095LHFLH
SWIF1095RHFRH

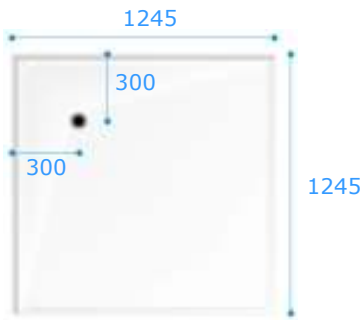
[More Options >>>>](#)

Swift

- Incorporates TRUESEAL floor edge profile
- Remove only 18mm of flooring
- Complete level access
- Variety of tray sizes available

SWIFT

SWIF1245 (Formerly SWIFT006)



Tray not handed.
Reference Code: SWIF1245

Option A



A – 470
B – 700
C – 710
D – 460

Bi-folding door hinging from a fixed panel for corner access.
Right hand illustrated
SWIF1245ALH
SWIF1245ARH

Option B



A – 300
B – 640

Bi-parting doors hinging from fixed panels for corner access.
Not handed
SWIF1245B

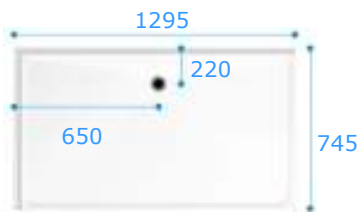
Option C



A – 530
B – 550

Twin bi-folding doors provide maximum access in a confined space.
Not handed
SWIF1245C

SWIF1295 (Formerly SWIFT005)



Left hand illustrated
Reference Code: SWIF1295

Option A



A – 600
B – 620
C – 580

Bi-folding door hinging from the wall for corner access.
Right hand illustrated
SWIF1295LHALH
SWIF1295RHARH

Option B



A – 575
B – 650
C – 590

Bi-folding door hinging from the fixed panel for corner access.
Right hand illustrated
SWIF1295LHBLH
SWIF1295RHBRH

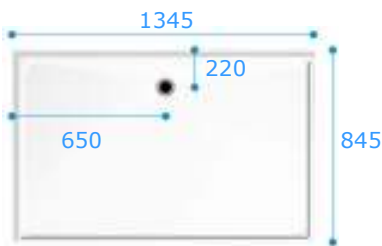
Option C



A – 540
B – 680
C – 580

Bi-parting doors for corner access and ease of use.
Right hand illustrated
SWIF1295LHCLH
SWIF1295RHCRH

SWIF1345 (Formerly SWIFT001)



Left hand illustrated
Reference Code: SWIF1345

Option A



A – 650
B – 625
C – 680

Bi-folding door hinging from the wall for corner access.
Right hand illustrated
SWIF1345LHALH
SWIF1345RHARH

Option B



A – 625
B – 650
C – 690

Bi-folding door hinging from the fixed panel for corner access.
Right hand illustrated
SWIF1345LHBLH
SWIF1345RHBRH

Option C



A – 590
B – 680
C – 680

Bi-parting doors for corner access and ease of use.
Right hand illustrated
SWIF1345LHCLH
SWIF1345RHCRH

Option D



A – 1145
B – 515
C – 505

Bi-parting doors with a fixed panel where assisted bathing is required.
Right hand illustrated
SWIF1245DLH
SWIF1245DRH

Option E



A – 1175
B – 505
C – 525

Bi-folding door with a fixed panel where assisted bathing is required.
Right hand illustrated
SWIF1245ELH
SWIF1245ERH

Option WF5



Minimum - 875mm
Maximum - 1350mm

Twin sliding doors opening outwards for maximum access and ease of use.
Minimum 875mm & maximum 1350mm
Not handed
SWIF1245WF5

Option D



A – 545
B – 585
C – 580

Bi-folding and single door for maximum tray access.
Right hand illustrated
SWIF1295LHDLH
SWIF1295RHDRH

Option E



A – 750
B – 410
C – 675

Full height enclosure at 1850mm, with full height outward opening door.
Right hand illustrated
SWIF1295LHELH
SWIF1295RHERH
*Curtain not supplied with this option

Option F



A – 710
B – 415
C – 675

Single door with fixed and return panel where assisted bathing is required.
Right hand illustrated
SWIF1295LHFLH
SWIF1295RHFRH

Option D



A – 570
B – 610
C – 680

Bi-folding and single door for maximum tray access.
Right hand illustrated
SWIF1345LHDLH
SWIF1345RHDRH

Option E



A – 750
B – 460
C – 775

Full height enclosure at 1850mm, with full height outward opening door.
Right hand illustrated
SWIF1345LHELH
SWIF1345RHERH
*Curtain not supplied with this option

Option F



A – 710
B – 465
C – 775

Single door with fixed and return panel where assisted bathing is required.
Right hand illustrated
SWIF1345LHFLH
SWIF1345RHFRH

Swift

- Incorporates TRUESEAL floor edge profile
- Remove only 18mm of flooring
- Complete level access
- Variety of tray sizes available