

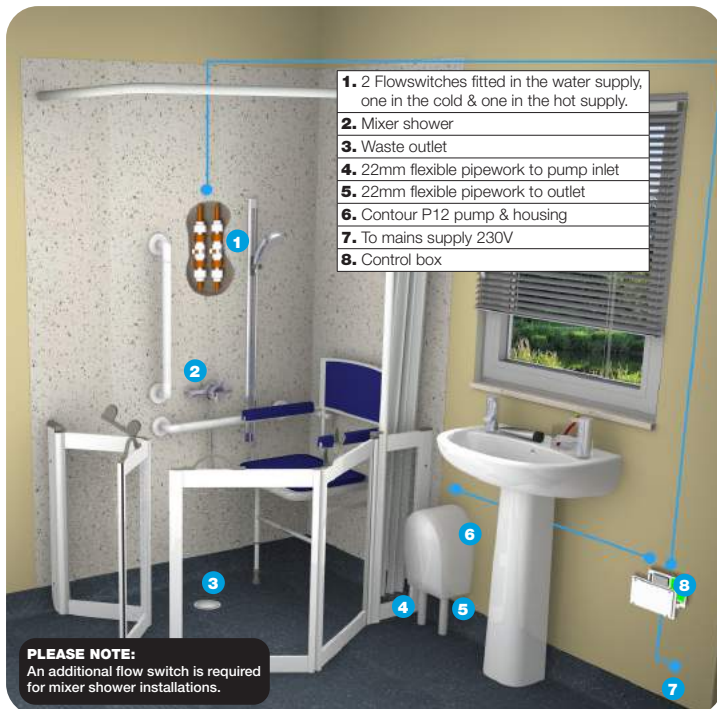
Fitting Instructions CONTOUR P12 Shower Waste Pump

ENSURE YOU USE THE 22mm Flexible Pipe supplied.

TYPICAL ELECTRIC SHOWER INSTALLATION



TYPICAL MIXER SHOWER INSTALLATION



INSTALLATION GUIDELINES

READ BEFORE BEGINNING YOUR INSTALLATION TO ENSURE YOU MAINTAIN P12 AT PEAK PERFORMANCE. ANY VARIATION **WILL** IMPEDE THE PUMP'S PERFORMANCE.



If you are installing an electric shower & single flowswitch, see sections **A, B & D**

If you are installing a mixer shower & two flowswitches, see sections **A, B, C & D**

If you are installing an electric shower with a direct link which does not require a flowswitch, see sections **A, B & D**.

The **22mm flexible pipework** supplied **must** be used from the gully to the pump's inlet.

The maximum length between the waste and the pump should be no more than 2 metres.

For **optimum** performance of 12 litres per minute we recommend the pump be installed no higher than **350mm** from the top of the shower waste outlet to the underside of the wall plate. The pump can be installed upto a maximum height of **500mm** to the underside of the wall plate, but this **will** reduce the pump's overall performance.

See Note 3a, overleaf, for Gannet shower tray installations.



A SUITABLE MEANS OF ISOLATION MUST BE PROVIDED. THE SUPPLY TERMINALS CAN BE ISOLATED BY ALL-POLE DISCONNECTION. A QUALIFIED ELECTRICIAN MUST MAKE THE MAINS ELECTRICAL CONNECTION.

THE PUMP **MUST NOT** BE FITTED IN THE SHOWERING AREA.

- **STANDARD** kits include 1 x flowswitch and are meant for typical electric shower installations.
- **LINK** kits have no flowswitch and are meant to be wired directly to a suitable link enabled electric shower.

FOR TOP ACCESS SHOWER TRAYS - PUMP ONLY



Pump only should be used with a Gannet top access shower tray.

STANDARD KIT REF: 05PP01
LINK PUMP ONLY: 05PP01-L

FOR SHOWER TRAYS - Kit A



- UPSW3 is only 30mm in depth
- 22mm outlet
- Chrome top flange

STANDARD KIT REF: 05PP01A
LINK PUMP ONLY: 05PP01A-L

FOR FLOOR FORMERS - Kit B



- USG1-WH is only 45mm in depth
- 22mm outlet
- Manufactured in white ABS
- Withstands wheelchair loadings

STANDARD KIT REF: 05PP01B
LINK PUMP ONLY: 05PP01B-L

FOR SHOWER TRAYS - Kit D



- Use with an Eagle Two shower tray or Prinia shower tray
- UPSW-4 is only 32mm in depth
- 22mm outlet
- Chrome top flange

STANDARD KIT REF: 05PP01D
LINK PUMP ONLY: 05PP01D-L

ADDITIONAL ITEMS



Additional flowswitch for use with a mixer shower.
Ref: 05PP11



Optional Control Box **Ref: 05PP16**



Optional Flow Switch cover **Ref: 05PP17**

GETTING TO KNOW YOUR CONTOUR P12 PUMP

EARTH TERMINAL

PUMP TERMINALS

By swapping the wires around the pump will change direction. Use the 'Test' button (in the Control Box) to set the direction to match the inflow and outflow. Once the inlet and outlet direction has been established this **should not** be changed. The pump speed can also be adjusted (in the Control Box) to match the shower flow rate.

WALL PLATE

Quick release wall bracket allows for easy installation. The pump housing clips onto the wall plate for easy fitting.

INLET & OUTLET CONNECTORS

Elongated inlet & outlet connectors ensure an airtight fit.

Ensure all pipework is tightened securely to avoid any air being sucked in whilst the pump is operating.

Once the inlet and outlet direction has been established this **should not** be changed.



ENSURE YOU USE 22mm Flexible Pipe supplied.



Pump Housing Dimensions

A = 190mm
B = 210mm
C = 330mm

Pump Only Dimensions

(Housing not fitted)
A = 180mm
B = 205mm
C = 270mm

The housing clips onto the wall plate. Manufactured from ABS. The flow switch & control box covers are optional accessories, see above.



Technical Helpline: 0845 402 9924

SECTION A

Installing the pump



- ! USE THE WASTE / GULLY SUPPLIED. CAN BE RETRO FITTED TO OTHER MANUFACTURERS COMPATIBLE WASTES.



- ! USE THE COLLAR PROVIDED TO PROTECT THE FLEXIBLE PIPE WHEN DETAILING THE FLOOR COVERING.



Remove the pump from the wall bracket by undoing the bolts on the top bracket, Point 2, and twisting the inlet & outlet spigots anti-clockwise so the flanges align with the slots in the wall bracket, Point 2a. The pump body will now slide away from the wall bracket.

The 22mm flexible pipe supplied must be used from the 22mm outlet gully or waste to the pumps inlet. **Cut the flexible pipe to the required length. One end of the pipe has a grey solvent weld connector, this must be solvent welded to the gully / waste outlet. LEAVING EXCESS PIPE COILED BENEATH THE SHOWER TRAY WILL IMPEDE THE PUMPS PERFORMANCE.**

The maximum length of the flexible pipe between the waste and the pump should be no more than **2 metres**, with as few, or no bends as possible.



- ! THE PUMP **MUST NOT** BE FITTED IN THE SHOWERING AREA.



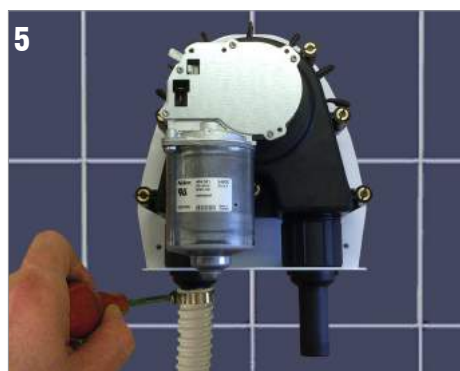
- ! IF INSTALLING A **GANNET** TRAY INSTALL THE PUMP NO HIGHER THAN **350mm** FROM THE TRAY OUTLET TO THE UNDERSIDE OF THE WALL PLATE.

Fit the pump within 2 metres of the gully or waste. To achieve **optimum** pump performance of 12 litres per minute we recommend the pump be installed no higher than **350mm** from the top of the shower waste outlet to the underside of the wall plate, as shown in Point 3a .

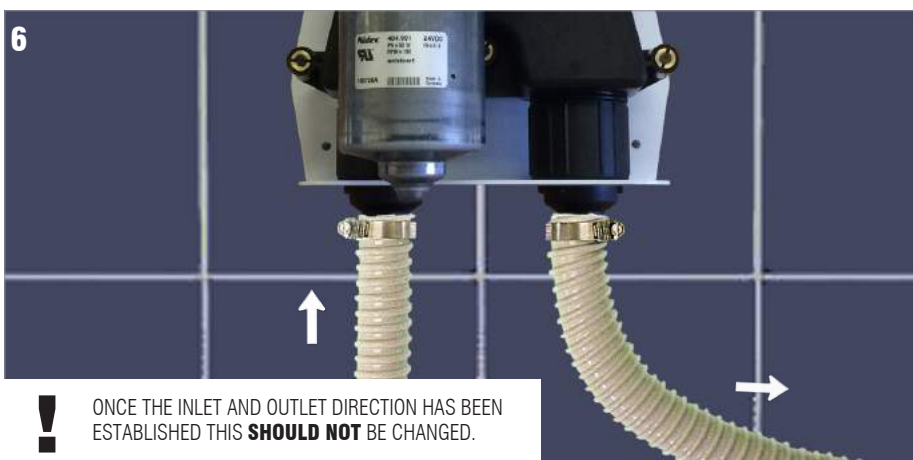
The pump can be installed upto a maximum height of **500mm** but this will reduce the pump's overall performance. **See note 3a above if installing a Gannet top access shower tray.**



When level, mark holes and screw directly to the wall using suitable fixings. Do not over tighten the screws. Re-mount the pump to the bracket as previously described in Points 2 & 2a. The pump can be mounted horizontally, as shown, or vertically without effecting performance.



- ! ENSURE ALL PIPEWORK CONNECTIONS ARE SECURE TO AVOID ANY AIR BEING SUCKED IN WHILST THE PUMP IS OPERATING.



- ! ONCE THE INLET AND OUTLET DIRECTION HAS BEEN ESTABLISHED THIS **SHOULD NOT** BE CHANGED.

Now connect the pump to the gully / waste pipework using the flexible pipework kit supplied, ensure both flexible pipes and jubilee clips are attached. **FLUSH OUT PIPEWORK BEFORE MAKING FINAL CONNECTION TO THE PUMP.**

Install the pump so that the outlet side of the pump is slightly higher than the soil pipe connection, this will ensure a clean flow away from the pump, and help to keep the pipework clear. If you want to use larger outlet pipework a suitable 22 - 40mm connector can be used. **ENSURE ALL PIPEWORK IS SECURELY FIXED TO THE WALL WITH SUITABLE PIPE CLIPS.** Do not leave excess pipe coiled up beneath the shower tray.

SECTION B: Electric Shower

Installing using a single flowswitch or linking directly to the shower without a flowswitch



! FIT IN AN ACCESSIBLE AREA SO YOU CAN ACCESS THE FILTER FOR MAINTENANCE OR FOR CLEANING.

Fit the supplied filter in the water supply going to the shower. This must be fitted before the flowswitch.

The arrow on the filter must point in the direction the water is flowing.

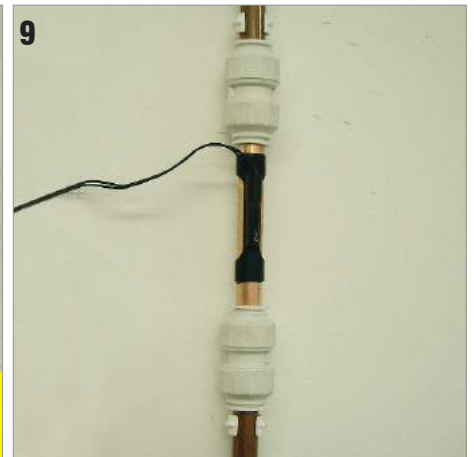


⚡ IF YOU ARE CONNECTING DIRECTLY TO AN ELECTRIC SHOWER WITH THE WASTE PUMP CONNECTION GO TO **POINT 11**

Install the flowswitch control in the cold water supply going to the shower.

IMPORTANT: FIT AS CLOSE AS POSSIBLE TO THE SHOWER TO STOP ANY FALSE READINGS OCCURRING.

Fit in any position or orientation, the arrow on the flow switch must point in the direction the water flows.

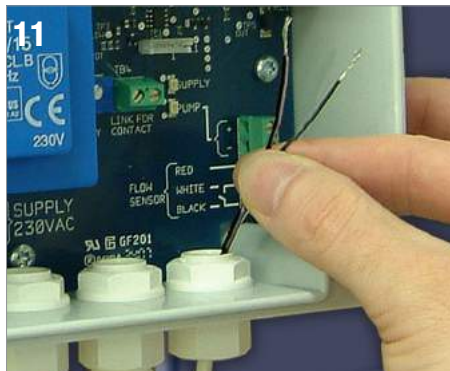


The flowswitch must be secured using two 15mm pipe clips. Run the 2 core flowswitch cable to the control box.



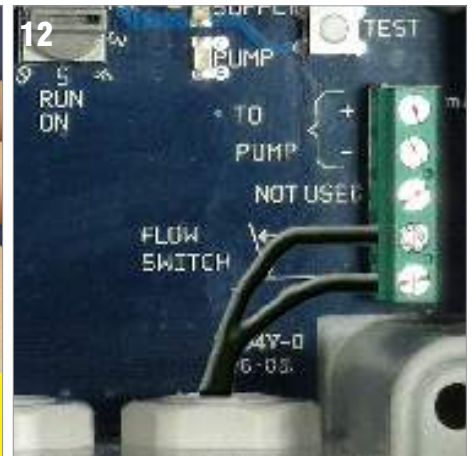
! NEVER INSTALL THE CONTROL BOX IN THE DIRECT SHOWER AREA. REMOVE & DISPOSE OF ANY CARDBOARD / FOAM TRANSPORT PACKAGING.

Choose a suitable position for the control box as near to the pump as possible and mark 4 fixing holes onto the wall and screw to the wall using suitable fixings.



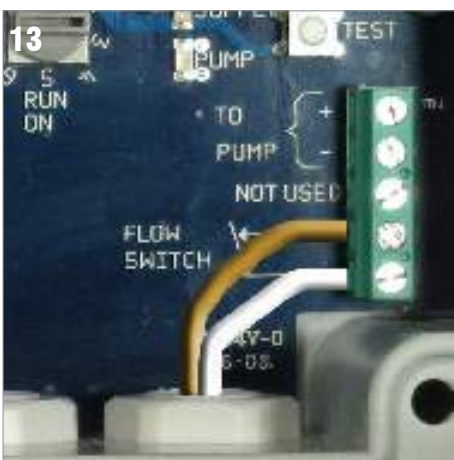
P12 PUMP CAN BE LINKED DIRECTLY WITH A MIRA ADVANCE ATL FLEX EXTRA OR REDRING SELECTRONIC PREMIER WP. GO TO POINT 13.

Unscrew one of the glands and pass through the cable from the flowswitch or electric shower.



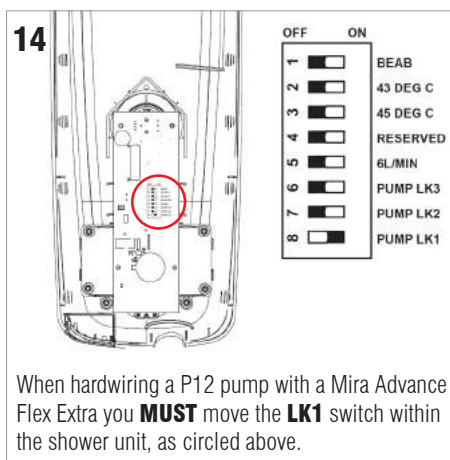
Connecting directly using a flowswitch

Re-tighten the gland and connect the flowswitch cable to the terminals marked flowswitch. (It doesn't matter which way the wires go in).



Linking directly with a Mira Advance Flex Extra or Redring Selectronic Premier WP

Re-tighten the gland and connect the electric shower cables to the terminals marked flowswitch, as shown.

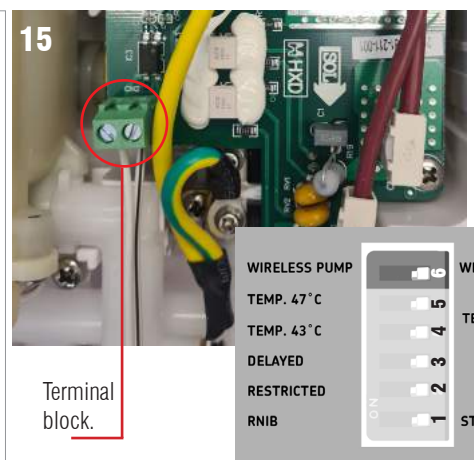


When hardwiring a P12 pump with a Mira Advance Flex Extra you **MUST** move the LK1 switch within the shower unit, as circled above.

****IMPORTANT****

The **LK1** switch, 8 shown above, needs to be in the "ON" position. The **LK1** switch is located on the inside front cover of the Mira shower unit.

If connecting to a Redring Selectronic WP shower, please refer to the instructions supplied with the shower.



Terminal block.

When hardwiring a P12 directly to an AKW shower,

you **MUST** move DIPSWITCH 6, located on the inside front cover, so it is set at the Wired Pump position as shown above right. Connect the wires from the P12 pump to the terminal block on the shower PCB board as circled above.

ENSURE ALL FOAM, PLASTIC AND CARDBOARD PACKAGING IS FULLY REMOVED

Technical Helpline: 0845 402 9924

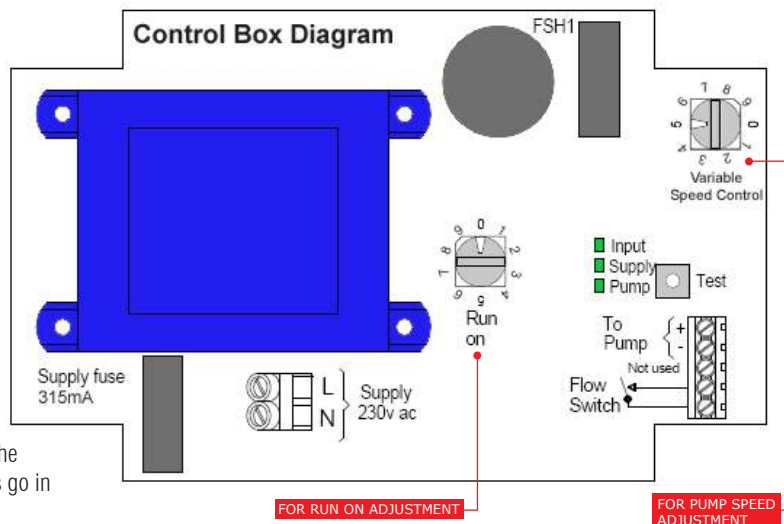
SECTION C: Mixer Shower

Installing an additional flowswitch

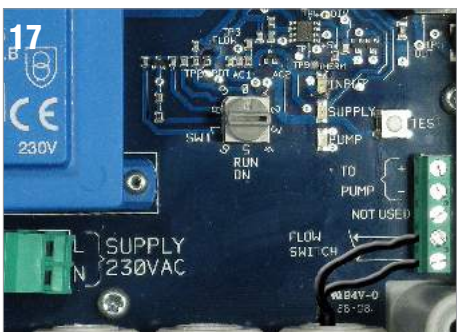


! REPEAT STEPS 7, 8 & 9 FITTING THE FILTER & FLOWSWITCH IN THE HOT WATER SUPPLY, & WIRE IN AS ABOVE, SEE ALSO WIRING DIAGRAM, SEE RIGHT.

Re-tighten the gland and connect the second flowswitch cable to the terminals marked flowswitch. It doesn't matter which way the wires go in and it should be wired in parallel to the same terminal blocks.



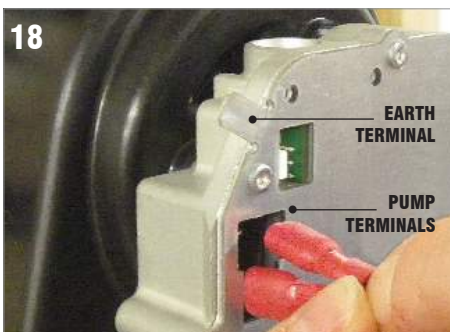
SECTION D: Setting up the pump



! THERE IS AN EARTH TERMINAL ON THE PUMP, SEE POINT 18.

From the control box run a 1.5mm cable to a suitable power supply outside the bathroom. Electrical supply must be on a spur fuse and fused at 3 amp. Before connecting the spur fuse connect the cable to the connections in the control box as follows:

BROWN to L BLUE to N (See WIRING DIAGRAM, ABOVE).



! ONCE INSTALLED, THE PUMP'S PIPEWORK DIRECTION **SHOULD NOT** BE CHANGED.

Connect the cable from the motor output to the pump and run the rest of the cable to the control box. Attach the 2 wires with the spade type connections to the pump terminals.

BY SWAPPING THE WIRES AROUND THE PUMP WILL CHANGE DIRECTION. USE THE 'TEST' BUTTON TO SET THE DIRECTION TO MATCH THE INFLOW AND OUTFLOW.



! **EXAMPLE:** SETTING THE SWITCH AT 2 WOULD BE 20 SECONDS, SETTING AT 4 WOULD BE 40 SECONDS.

There are 10 adjustable settings for the run on time. 0 (zero) represents no run on time. Each stepped increment is 10 seconds, approximately, upto a maximum of 90 seconds. Turn the finger control clockwise to increase the run on time.

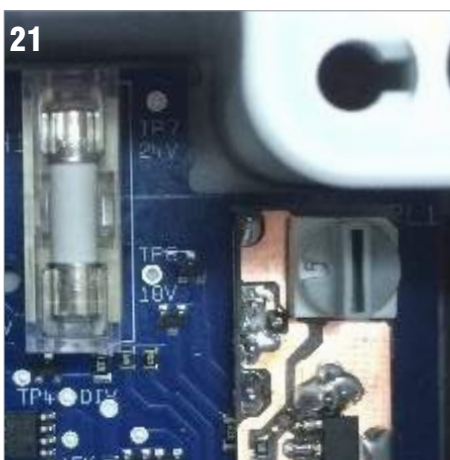
YOU SHOULD RUN THE SHOWER AS PART OF THE PUMP SET-UP PROCESS TO ENSURE THE PUMP RUN ON TIME IS SUFFICIENT TO REMOVE ALL WATER FROM THE SHOWER TRAY.



! BY PRESSING & HOLDING THE 'TEST' BUTTON THE PUMP WILL RUN, THE PUMP WILL STOP WHEN THE BUTTON IS RELEASED.

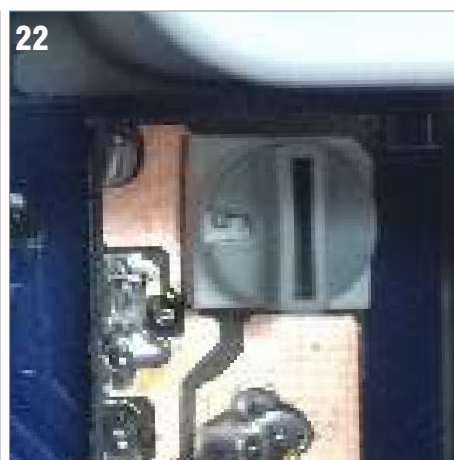
P12 pump has 3 LED indicators.

INPUT = Flowswitch is connected and water is flowing.
SUPPLY = The control box is live and power is present.
PUMP = Illuminated when the pump is running.



P12 pump has 10 variable speed settings. Using this dial P12 can be adjusted to match the showers flow rate.

TURN ANTI-CLOCKWISE = Lower speed
TURN CLOCKWISE = Higher speed



Default setting is '5' to suit a typical electric shower. Turn the finger control clockwise to increase the pump speed for higher flow showers.
 0 = Lowest speed
 9 = Highest speed

YOU MUST MAKE THIS ADJUSTMENT TO SUIT EACH SPECIFIC INSTALLATION.

ENSURE ALL FOAM, PLASTIC AND CARDBOARD PACKAGING IS FULLY REMOVED

Technical Helpline: 0845 402 9924

SECTION D: Setting up the pump Continued...

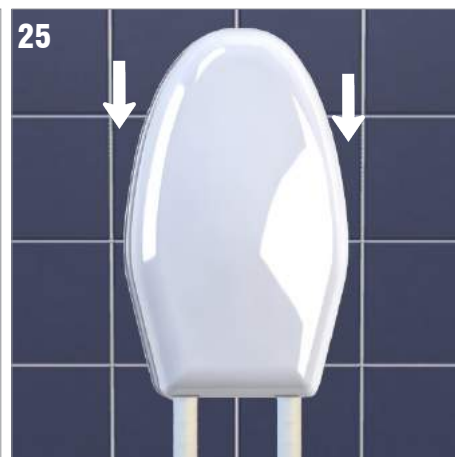


The pump housing is moulded to allow ease of fitting around the inlet and outlet pipework.



There are 3 lugs on the inside edge of the cover, circled above, which locate onto the wall plate.

The black pad on the inside of the cover is to eliminate vibration and should not be removed.



Offer the pump cover up to the pump, holding it slightly above the wall plate, then gently slide the cover down until it clips positively into position.

PUMP PERFORMANCE

- Use the Installation Kits supplied from the waste / gully to the pumps inlet and from the outlet to improve performance. Ensure there is as few, or no bends.
- The maximum length of the flexible pipe from the waste to the pump should be no more than **2 metres**.
- The pump is adjustable for use with an electric or mixer shower with a maximum discharge to the waste of 12 litres per minute.
- Fit the pump within 2 metres of the gully or waste and have the outlet pipework running down to the soil pipe or drain.
- Fit the pump within 2 metres of the gully or waste. To achieve **optimum** pump performance of 12 litres per minute we recommend the pump be installed no higher than **350mm** from the top of the shower waste outlet to the underside of the wall plate.
- The pump can be installed up to a **maximum of 500mm** but this **will** reduce the pump's overall performance.
- **For Gannet top access shower trays the pump should be fitted no higher than 350mm from the tray outlet to the underside of the P12 wall plate.**
- Ideally, the run-off from the pump should fall gradually to the outlet. However, the P12 Pump is capable of providing a head of water in excess of 3.5 metres with appropriate pipework. For information on how to achieve this, please contact our technical helpline, **0845 402 9924**.

TECHNICAL SPECIFICATION

- Self priming, 24 volt pump
- 22mm inlet & outlet.
- Outlet from the pump **must be** 22mm. If you want to use larger outlet pipework a suitable 22mm - 40mm connector can be used.
- Pump complies to BS7671
- 7 year warranty, see right.

ELECTRICAL CONTROL BOX

- Power Consumption 36 Watts intermittent rating
- 2.5 amp Fast blow fuse
- IP65 Enclosure for bathrooms
(Never install directly in the showering area).

CONTOUR P12 Pump conforms to the requirements of the EC Low Voltage Directive 73/23/EEC (amended by 93/68/EEC)

CONTOUR P12 Pump is a Patented Product

Manufactured by H2O Pumps Limited exclusively for Contour Showers.

H2O Pumps Limited and Contour Showers reserve the right to change specifications at any time without prior notice. Our policy is one of continuous improvement and we reserve the right to change specifications without prior notice.



WARRANTY

For a period of 7 years from purchase we will repair or replace any faulty pump, control box or flowswitch which has been correctly installed in an appropriate application and has not been tampered with or modified in any way.

The warranty does not include:

- Damage or blockages caused by foreign objects to the pump or flowswitch.
- The cost arising from the removal or reinstatement of tiling etc.
- Damage resulting from the product failing.
- General wear and tear.

To report a fault contact our Technical Helpline on **0845 402 9924**



Electrical and electronic devices contain a range of materials that can be separated for recycling and used in new products. This product should not be disposed of with your general household waste.

When this product has reached the end of its serviceable life please take it to a recognised WEEE (Waste Electrical and Electronic Equipment) collection facility such as your local civic amenity site for recycling. Your local authority or retailer will be able to advise you of your nearest recycling facility.

Contour Showers, Siddorn Street, Winsford, Cheshire CW7 2BA
Telephone: 01606 592586 Fax: 01606 861260
Email: sales@contour-showers.co.uk
Website: www.contour-showers.co.uk

CONTOUR
 built-in independence