



DOC M SHOWER PACK

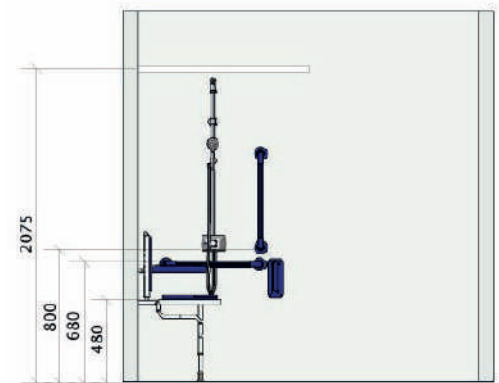
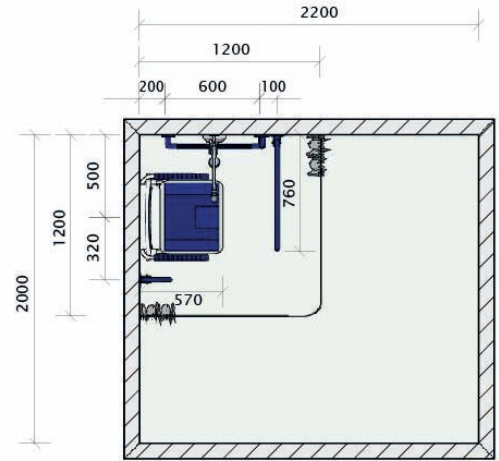
A wheelchair friendly Doc M shower pack ideal for use in Public, Municipal, Commercial Premises, Schools, Colleges, Care Homes, Hotels & Sports Facilities.

Designed to assist people who may struggle with day to day showering by providing a safe, thermostatically controlled shower, grabrails to hold onto, hinged support arms to hold on to whilst sitting down & as an aid to get into a standing position again, as well as a comfortable seat to rest on whilst showering.

FEATURES:

- Exposed Bristan Opac TMV3 lever operated shower valve with single sequential control for temperature & flow.
- Doc M Showering Kit with Diverter comprises a riser rail with a fixed shower head, handset & hose. It features an anti-vandal shower head with directional control & rub clean anti-limescale single function handset.
- Full length back shower seat, provides more comfort & support than a traditional shower seat. It's oversized full length padded backrest provides excellent support & has a robust, corrosion resistant frame construction.
- Shower seat folds up against the wall when not in use, projection: 230mm.
- Straight, fluted, Blue ABS grab rails, 450mm & 600mm long x 36mm diameter with concealed wall fixings & with a maximum tested load rating of 200kg.*
- Overall grab rail lengths: 450mm = 535mm & 600mm = 685mm.
- Doc M Compliant, stainless steel, hinged support arms provide a safe way of sitting down or standing. 35mm stainless steel, tubular construction provide superior strength & confidence.
- Hinged support arms tested to 170kg in vertical & 45° positions.*
- Antibacterial, weighted, white 4oz satin striped shower curtains 1800x2000mm drop & rust proof, chrome nickel plated eyelets.
- L shaped 1200x1200mm shower curtain rail with shower curtain hooks & gliders.
- Meets all Doc M Building Regulations.

*When fitted as per manufacturers recommendations & using appropriate fixings, not supplied.



Layout drawings are for guidance only. Refer to relevant building regulations.
(Only Doc M Shower Pack components illustrated).

| Contents | Guarantee Period |
|--|------------------|
| 1 x Full Length Back Shower Seat | 5 Years |
| 3 x 600mm Grab Rails - Blue | 1 Year |
| 1 x 450mm Grab Rail - Blue | 1 Year |
| 2 x Hinged Support Arms - Blue | 3 Years |
| 1 x Bristan Opac Thermostatic Shower Valve | 5 Years |
| 1 x Bristan DOC M Rigid/Flexi Kit & Diverter | 1 Year |
| 1x 1200x1200mm L Shaped Shower Curtain Rail | 1 Year |
| 2 x 1800x2000mm Drop Shower Curtain - White | - |

| Description | Reference |
|----------------------------|-----------|
| Doc M Shower Pack, RAL5002 | 10DM-SHB |